



FEATURES:

- AC Input 90~305 Vac Nominal
- Power Factor: > 0.95 @ 115 Vac / > 0.9 @ 230 Vac @ Full Load
- Protection: SCP / OVP / OCP
- High Operating Ambient Temp.: -20°C ~ +60°C
- Surge Protection: L-N 1 kV, L/N-FG 2 kV
- Safety: UL
- EMI: Meets FCC / Meets CE
- Comply with Indoor/Outdoor Waterproof (IP 67)
- Warranty: 5 years (refer to LinkCom warranty policy)
- RoHS Compliant

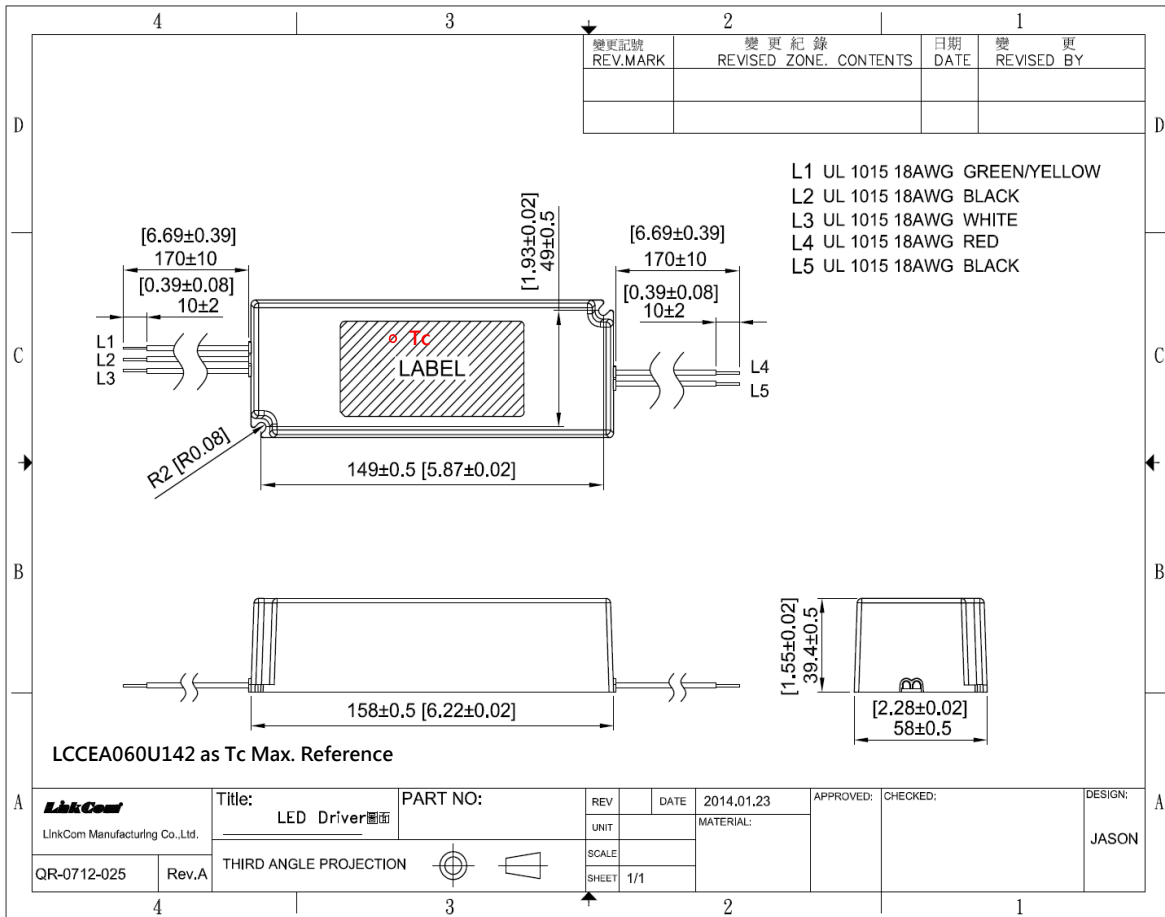
PRODUCT SPECIFICATION						
MODEL	DC OUTPUT POWER(W)	DC OUTPUT VOLTAGE(V)	OUTPUT CURRENT(A)	OUTPUT CURRENT TOLERANCE	EFFICIENCY	O/P NOISE(P-P,V)
LCCEA060U132-00	62.4	42-48	1.3	±5%	86%	4.6
LCCEA060U142-00	58.8	33-42	1.4	±5%	86%	4.2
LCCEA060U172-00	61.2	33-36	1.7	±5%	86%	3.6
LCCEA050U432-00	51.6	9-12	4.3	±5%	84%	2

ELECTRICAL SPECIFICATION	
INPUT VOLTAGE RANGE	90-305 Vac, 127-431 Vdc, Normal: 100-277 Vac
INPUT FREQUENCY	Range: 47-63 Hz, Normal: 50-60 Hz
ACTIVE POWER FACTOR	> 0.95 @ 115 Vac / > 0.9 @ 230 Vac at Full Load
THD	< 20% @ 277 Vac Full Load
TURN ON DELAY TIME	3 s at Full Load 115 Vac / 230 Vac
AC CURRENT	0.8 A / 115 Vac 0.4 A / 230 Vac
INRUSH CURRENT (Max.)	Cold Start 50 A @ 230 Vac
LEAKAGE CURRENT	0.75 mA / 132 Vac / 60 Hz
SHORT CIRCUIT PROTECTION	SCP, OVP and OTP will restart automatically after the fault condition is removed
OVER VOLTAGE PROTECTION	
OVER TEMP. PROTECTION	
OVER CURRENT PROTECTION	NA
OPERATING TEMP.	-20°C ~ +60°C
STORAGE TEMP.	-40°C ~ +80°C
RELATIVE HUMIDITY	10% to +90%, non-cond.
SAFETY	UL 8750
EMI	Meets FCC Part15 / Meets CE EN55015
WITHSTAND VOLTAGE	NA
ISOLATION RESISTANCE	NA
DIMENSION (L*W*H)	158 * 58 * 39.4 mm 【6.22 * 2.28 * 1.55 inch】

- (1) All parameters specified at 230 Vac input unless otherwise noted.
 (2) All specifications Typical at 25°C, unless otherwise noted, at normal line and load.
 (3) Ripple and Noise measured directly at pins/terminals at nom. load, 0.1uF bypass and 47uF electrolytic, pk-pk at 20MHz bandwidth.
 (4) Specified for free-air convection cooling.
 (5) Minimum load is NOT required for proper operation .
 (6) 100% Production Tested.

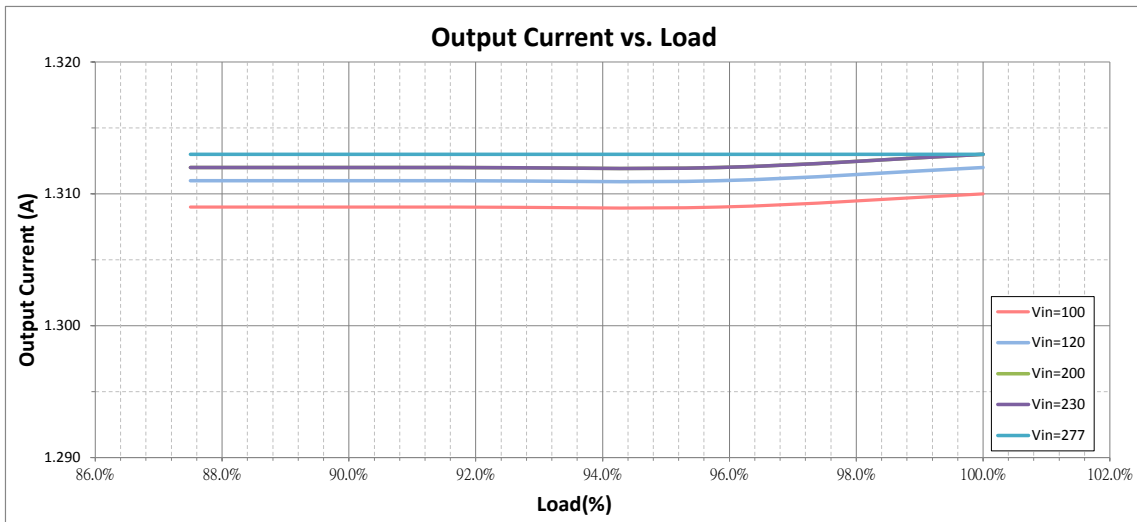
* REFERENCE: www.linkcom.com.tw
 * Please contact sales@linkcom.com.tw, sales@linkcomusa.com for more information

DIMENSIONS

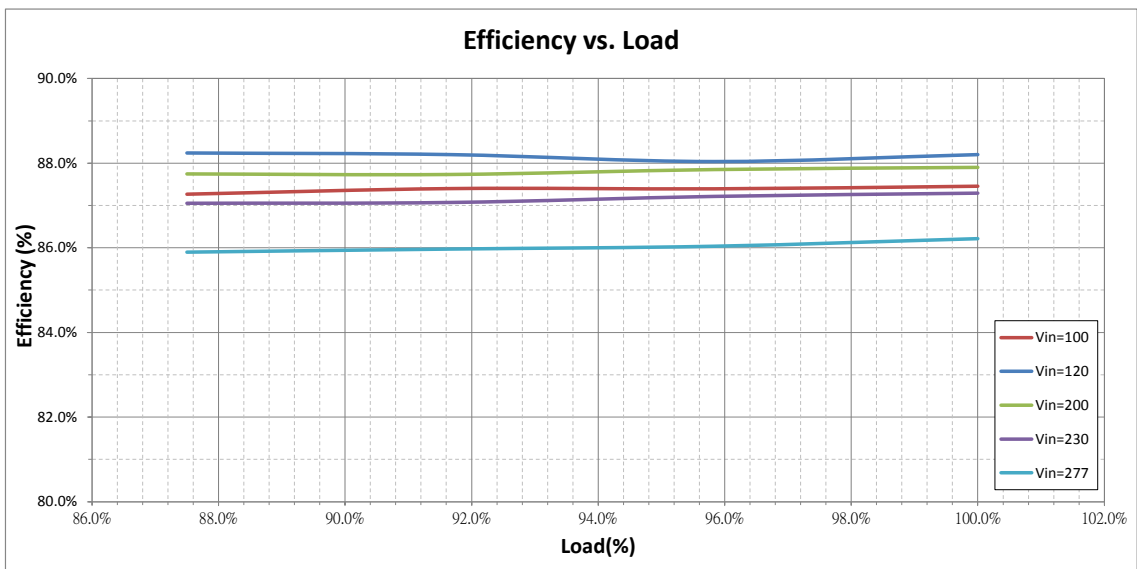


* REFERENCE: www.linkcom.com.tw

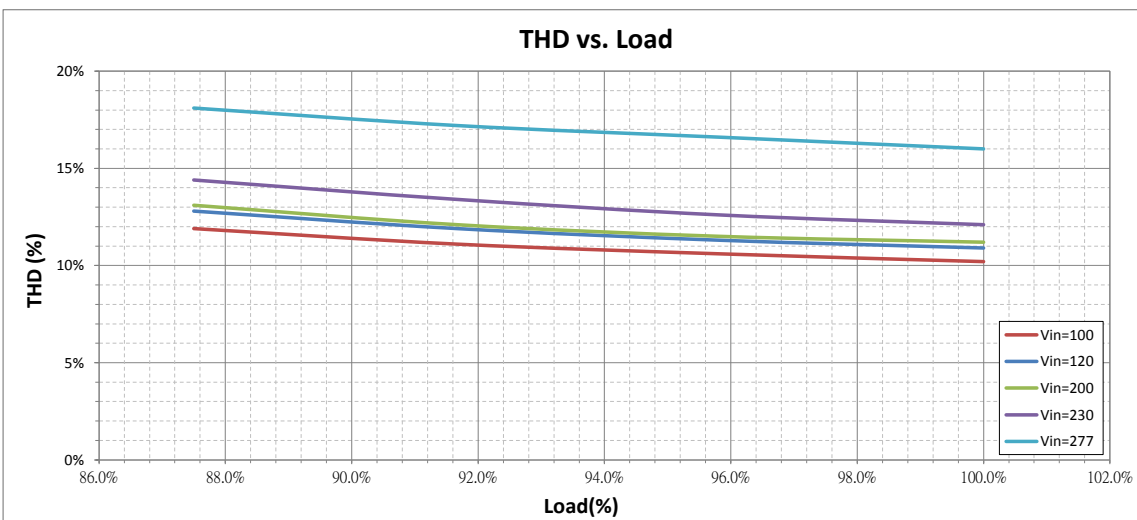
Output Current vs. Load (LCCEA060U132-00)



Efficiency vs. Load (LCCEA060U132-0)



THD vs. Load (LCCEA060U132-00)



PF vs. Load (LCCEA060U132-00)

