

Part/Keyword Search



Detailed Drawing



Printer Friendly Datasheet

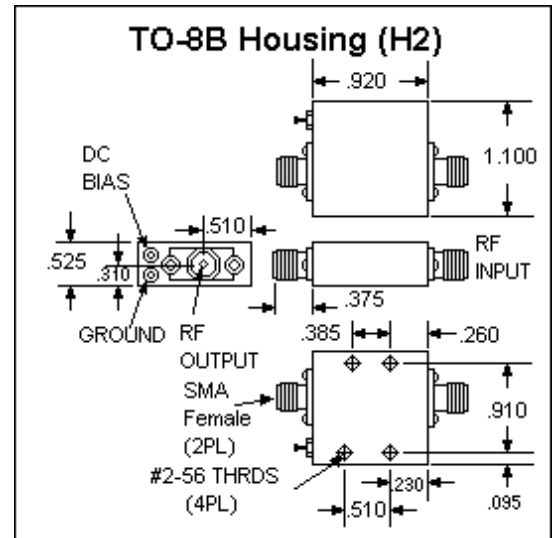
## BR3045 / SBR3045\*

\* Part number for additional environmental screening.

### Performance Data

Frequency	5.0 - 125.0 MHz
Gain	15.0 dB Typical 14.0 dB Min
Noise Figure	2.0 dB Typical 2.5 dB Max
P <sub>1dB</sub>	16.0 dBm Typical 14.0 dBm Min
3 <sup>rd</sup> Order Intercept	29.0 dBm Typical
2 <sup>nd</sup> Order Intercept	39.0 dBm Typical
VSWR	1.4/2.0 Input Typ/Max 1.4/2.0 Output Typ/Max
Reverse Isolation	-18.0 dB Typical -17.0 dB Min
Power Supply	12.0 Volts 29.0 mA
Operating Temperature	-40.0 - 85.0 °C

### Package Drawing



### Gain

dB



Frequency (MHz)

### Noise Figure

dB



Frequency (MHz)

### P<sub>1dB</sub> Compression Point

dBm



Frequency (MHz)

### Reverse Isolation

dB



- Products
- Amplifiers
- VCOs
- Limiting Amplifiers
- Switches
- Linearizers
- Limiters
- Analog Attenuators
- Digital Attenuators
- Detectors

**Frequency (MHz)**

## **Input VSWR**



**Frequency (MHz)**

## **Output VSWR**



**Frequency (MHz)**

### **Absolute Maximum Conditions**

Maximum Operating Temperature	-55.0 - 100.0 °C	Maximum Storage Temperature	-62.0 - 125.0 °C
Maximum Case Temperature	125.0 °C	Maximum Supply Voltage	18.0 Volts
Continuous RF Input Power	13.0 dBm	Short Term RF Input Power (1 minute max)	50.0 mW
Maximum Peak Power (3 µsec max)	0.5 W		

Amplifonix | 2707 Black Lake Place | Philadelphia, PA 19154  
Tel: 215.464.4000 | FAX: 215.464.4001 | Email: [info@amplifonix.com](mailto:info@amplifonix.com)

# i2 Technologies US, Inc.

## HTML Pages converted to PDF Document

This document contain component information from the manufacturer's website which are not available in a revision controlled document from the manufacturer. To facilitate the addition of these parts into the Electronics Database, we are converting the HTML pages related to that part, from the manufacturer's website into Adobe PDF format. The contents of this document is based on the information provided on the manufacturer's website, therefore the information may have been changed by the manufacturer since this was created.

