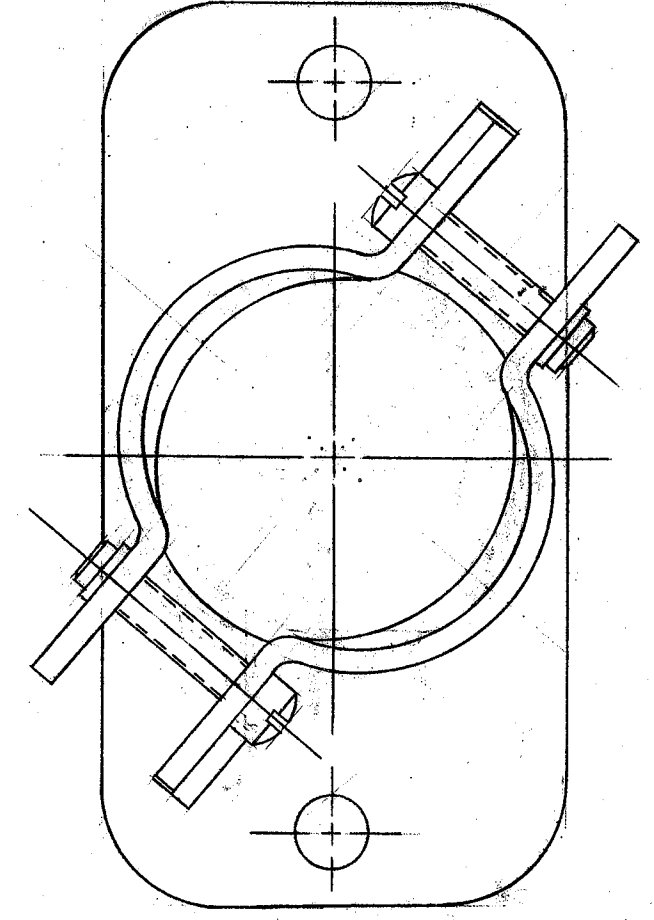
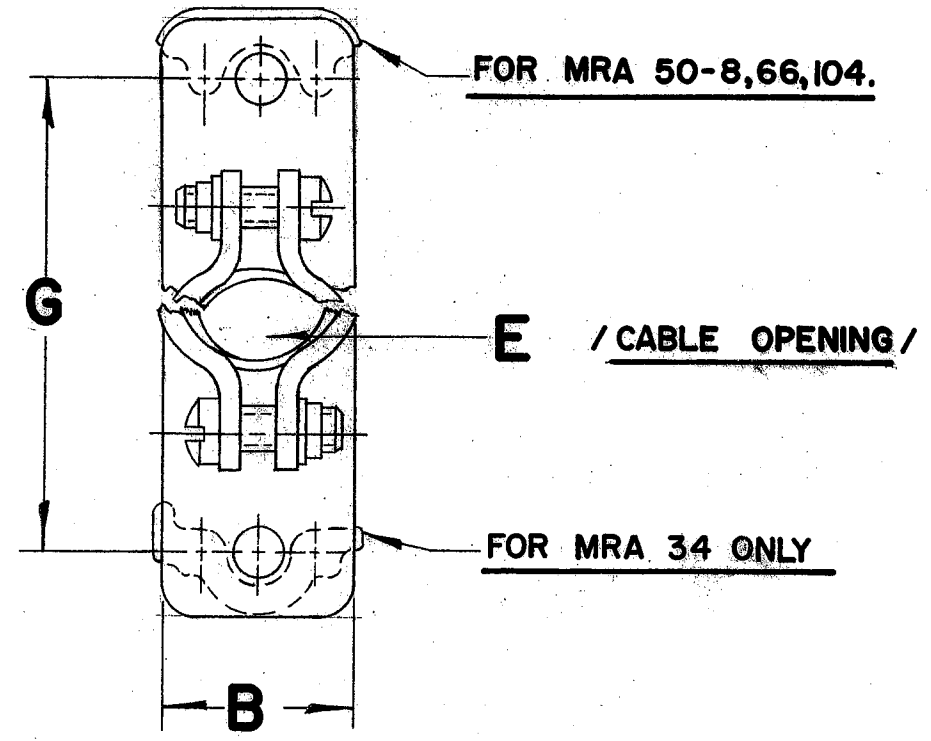
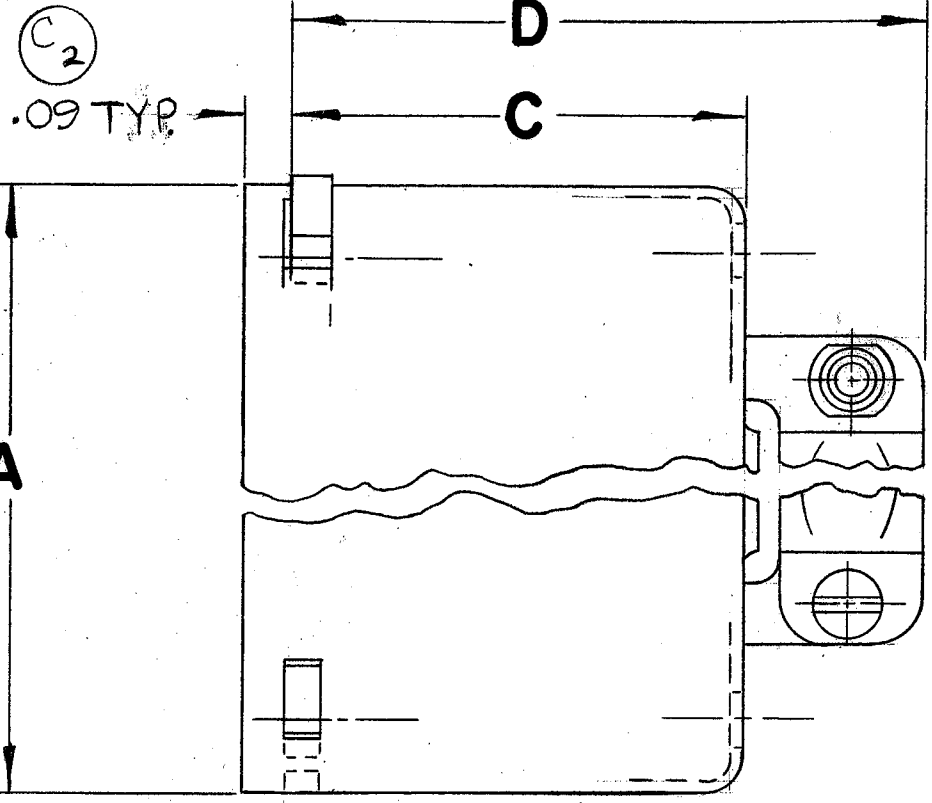


2-6

NUMBER OF CONTACTS	DIMENSIONS						
	A	B	C	D	E	F	G
34	2.09	.83	.17	1.59	.66X.75		1.688
50-8	2.38	1.22	.17	1.68	1.03		1.969
66	2.38	1.22	.17	1.68	1.03		1.969
104	2.84	1.63	2.23	2.75	1.19		2.375

C₁



MRA 50-8 & 66

TOLERANCE UNLESS OTHERWISE SPECIFIED FRACTIONS ± DECIMALS ± .007 ANGULAR ±

XX ± .02 C₃

This drawing, the designs and ideas embodied in the device to which it relates, and the methods of producing the device, are the property of Winchester Electronics, Incorporated and shall not be employed, copied, or disclosed to anyone, in any manner without the consent of Winchester Electronics, Incorporated.

REV.	CHANGE	DATE
B	REVISED & RE-DRAWN, ADDED VIEW FOR 50-8,66 REMOVED CHART EN-9844	7-11-63 R.P.
C	1) 2.09 WAS 2 3/32 2) .09 TYP WAS 5/64 3) ADDED ±.02 4) CHANGED ALL FRACTIONS TO DECIMALS ECR #2181	10/3/91 DOZZA T.V. M.D.

TITLE OUTLINE DRAWN HOODS REG. TOP OPENING FOR TURNABLE JACKSCREWS			
MATERIAL			
FINISH			
SCALE	DR. R. PUSKAR	CK'D. C.E. ERICSSON	AP'D. <i>F.H. Rowe</i>
	DATE 7-11-63	DATE 7-12-63	DATE <i>July 15-63</i>
WINCHESTER ELECTRONICS, INC. NORWALK, CONN.			
DWG. SIZE	B	2-6	REV. C