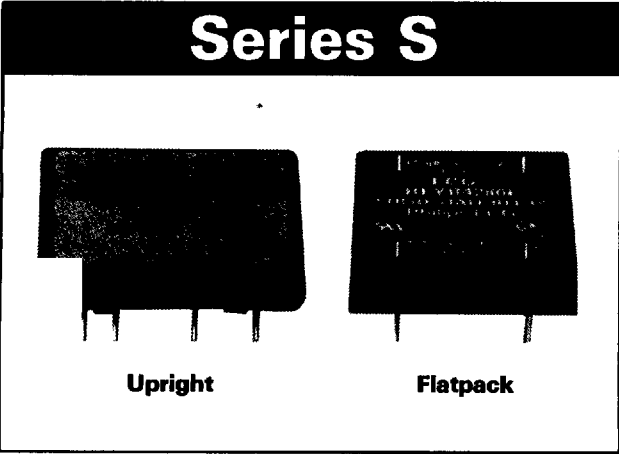


Series S



Solid State, 3 and 4 Amp Relays, SPST — Normally Open

- 3-32 VDC Logic Compatible Input
- 4000 Vrms Optical Isolation
- Zero Voltage Switching
- Output Rated at 600 PIV
- Internal RC Snubber
- Compact Package for PC Board Mounting
- Fits Standard I/O Mounting Boards
- Flatpack (F-Suffix)

Ratings

Type	Input Section				Output Section							
	Control Signal Range Volts	Input Imped. Ohms Min.	Must Operate Voltage Volts	Must Release Voltage Volts	Nom. AC Voltage RMS 47-70 Hz Volts	RMS Current Amps	Non Repetitive One Cycle Surge Current 60 Hz RMS Amps	Line Voltage Range 47-70 Hz VAC	Off-State Current at Nom. RMS Voltage mA	Peak On-State Voltage at Rated RMS Current V_{TM} Volts Max.	Min. Load Current mA	Peak Transient Over Voltage Volts
RLYB4280	3-32 DC	1500	3	1	280	4	100	24-280	8	1.6	50	600
RLYB4280F	3-24 DC	1500	3	1	280	3	100	24-280	8	1.6	50	600

dV/dt 200 V/ μ S
 Duty Continuous
 Operating and Storage Temperature -40°C to 100°C
 Dielectric 4,000 Vrms
 Coupling Capacitance 3 pF
 Turn On/Turn Off Time 8.3 ms

Accessories — Sockets

Description	Type No.
1-Position Socket	RLY9141
2-Position Socket	RLY9142
4-Position Socket	RLY9144

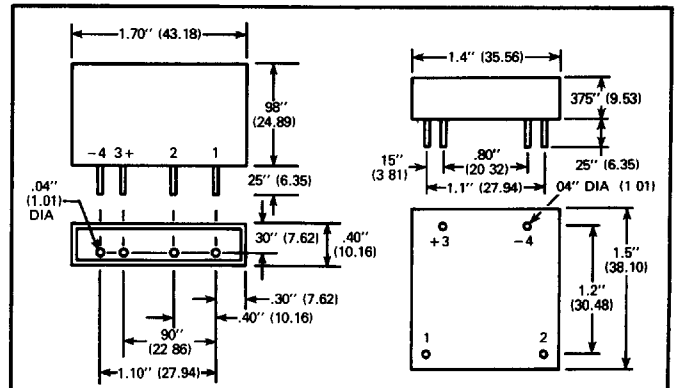
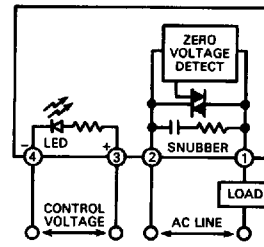
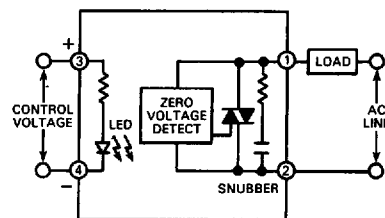


Fig. R6 (Upright)

Fig. R6-1 (Flatpack)



Schematic (Upright)



Schematic (Flatpack)