

PCMCIA "S" Interface Module

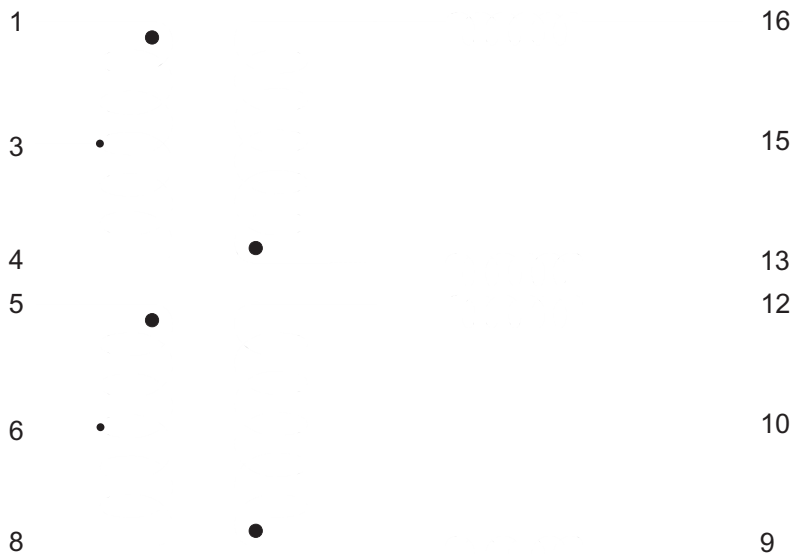
APC48301

ELECTRICAL SPECIFICATIONS @ 25°C

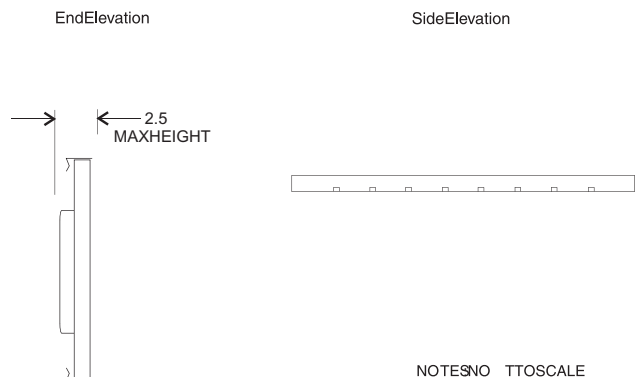
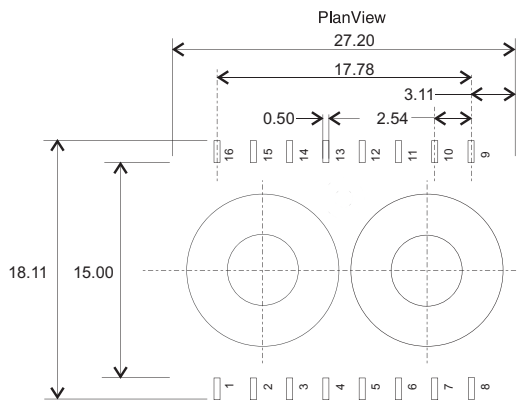
Turns Ratio LINE:IC	Primary Inductance (9-12,13-16) mH min	Primary DCR OHMS +/-15% (9-12,13-16)	Secondary DCR OHMS +/-15% (1-4, 5-8)	Leakage Inductance uH max	Capacitance w/w pF max	Choke	
						Inductance per line mH nom	DCR per line OHMS
1CT:2CT	20.0	1.0	1.5	10.0	60.0	0.04	0.2(NOM)

NOTES: PRIMARY PINS 9-12, 13-16
ISOLATION PRI:SEC 1500VRMS

SCHEMATIC



MECHANICAL



NOTES: NO T TOSCALE
TOLERANCE +/-0.2mm
ALL DIMENSIONS IN mm